



4GREEN



Grassy surface: 52 %



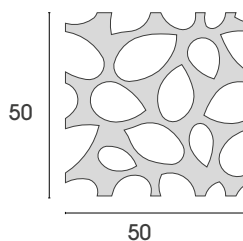
Run-off coefficient - Cd: 0.17 (with appropriate draining substrate)

The 4GREEN module is an innovative grass grid inspired by autumn soils that has a leaf pattern that is pleasant to the eye and suitable for light-duty trafficable flooring.



Slow traffic of only cars, parking lots, park entrances, campsites, agritourism, sports facilities.

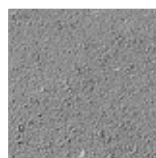
Sizes cm:



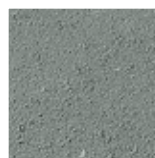
Thickness: 10 cm

Weight: 96 kg/m²

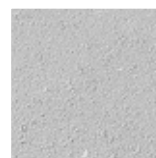
Colours:



mixed grey



green nature



arctic

TECHNICAL CHARACTERISTICS with which Pratoverde complies

Average density:	≥ 2200 kg/m ³
Water absorption:	Wa ≤ 6%
Drilling percentage:	52%

ITEMS SPECIFICATIONS

Grass grid composed of prefabricated blocks in double concrete layer, curvilinear in shape, part of a square of sides 500 mm x 500 mm, 100 mm thick. The blocks have within their configuration 7 central curvilinear holes and 13 perimeter through holes with a drilling percentage equal to 52%. Once the plates are placed near each other, a continuous and complex texture is formed without visibility of the modules.

ITEMS SPECIFICATIONS 4GREEN - GRASS COVER

Supply and laying, for the formation of avenues or parking lots of cellular structure in blocks of vibrocompressed concrete, 50x50 cm thick 10 cm, for grassy road flooring with holes of not less than 50% laid on a sand bed with a thickness of 4/5 cm on a draining supporting substrate in stabilized material, after installation of non-woven fabric, stabilized, rolled, with a thickness of not less than 20 cm. Internal filling of the cells with vegetable soil enriched with peat, fertilizers and seeds suitable for the perfect success of the green carpet.

LAYING RECOMMENDATIONS

FILLING WITH TURF: the laying must be carried out on a layer of granite sand; after a compaction done to perfection, the grilling is laid and the holes are saturated with a mixture of vegetable loam and finely crushed stone (50% sand, 30% peat, 20% loam); the turf is then sown. The end result is a grassy pavement, definable as "reinforced lawn", functional for parking areas for light vehicles, whose maintenance is similar to that of the lawn.



TEXTURES OF LAYING

